



THE PROPERTY
EXPLORER



21 Royal Close, Hatch Warren, Basingstoke, Hants, RG22 4XE
£1,150 PCM





21 Royal Close, Hatch Warren, Basingstoke, Hants, RG22 4XE

£1,150 PCM

The Property Explorer are delighted to offer a generously sized first floor split level 2 bedroom duplex apartment tucked away at the end of a cul-de-sac. Offering; two double bedrooms, spacious lounge with wooden flooring, well appointed modern kitchen, shower room and separate bathroom. The property is double-glazed and offers gas radiator central heating. There is a very private astro-turfed garden and garage. Unfurnished, No Smoking, Available 3rd October 2023

Tenant Information: Assuming rent agreed at £1,150 per month the Holding Deposit £265.38 is payable once offer accepted 'Subject to contract' to go towards first months rent and 5 x weeks Security Deposit £1,326.92 + Remaining First months rent £884.62 payable 2 working days before check in.

NB. Applicants must earn min 30 x rental (£1,150 pcm x 30) = £34,500 household income per year

- TWO BEDROOMS
- LOUNGE/DINER
- REFITTED KITCHEN
- TWO BATHROOMS
- GARAGE & PARKING
- UNFURNISHED
- AVAILABLE 3rd OCTOBER 2023



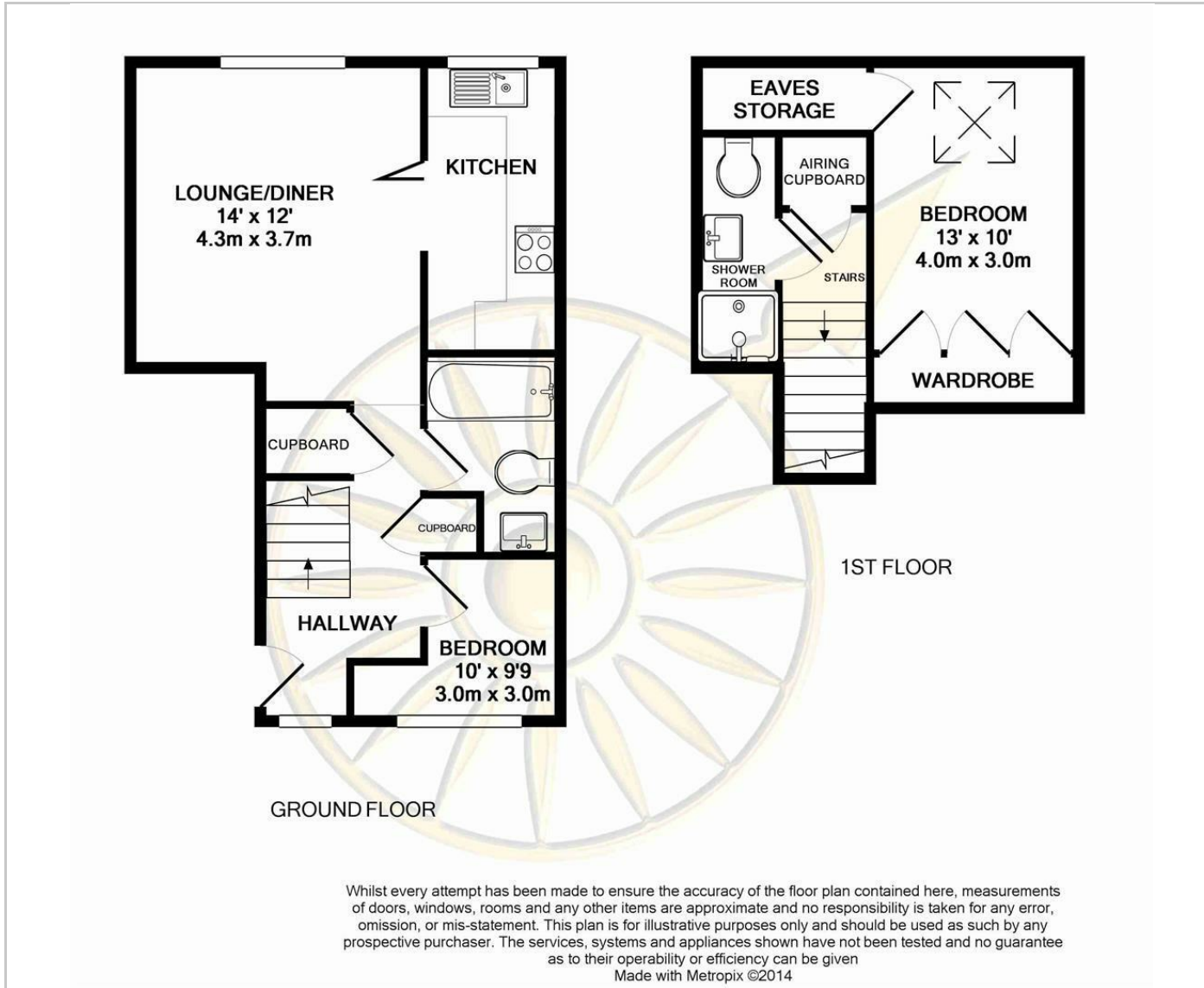
Unfurnished

Council Tax Band: C

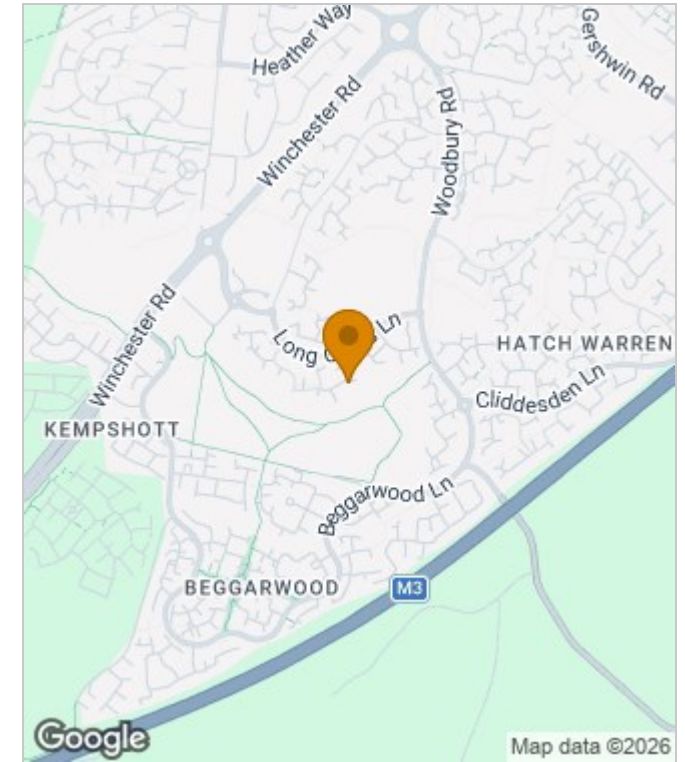
Available: 3rd October 2023

Deposit: £1,326

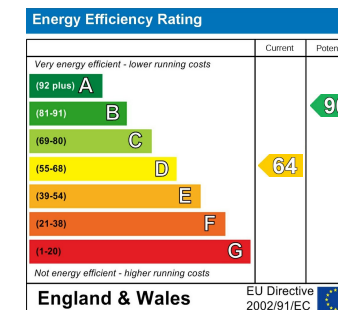
Floor Plans



Area Map



Energy Performance Graph



These particulars, whilst believed to be accurate are set out as a general outline only for guidance and do not constitute any part of an offer or contract. Intending purchasers should not rely on them as statements of representation of fact, but must satisfy themselves by inspection or otherwise as to their accuracy. No person in this firm's employment has the authority to make or give any representation or warranty in respect of the property.