



THE PROPERTY
EXPLORER



23 Avington Way, Sherfield-on-loddon, Hook, Hants, RG27 0AY
£1,500 PCM





23 Avington Way, Sherfield-on-loddon, Hook, Hants, RG27 0AY

£1,500 PCM

Explorer Lettings are pleased to present to the market this very well presented THREE BEDROOM town house on the premier Sherfield Park development. The property benefits from; downstairs cloakroom, spacious lounge, kitchen/diner, three generous bedrooms, family bathroom, en-suite to master, enclosed rear garden, garage with driveway parking. Council Tax Band D. UNFURNISHED. Regret NO PETS. NO SMOKERS. Available 10th July 2023

Tenant Information: Assuming rent agreed at £1500 per month the Holding Deposit £346.15 is payable once offer accepted 'Subject to contract' to go towards first months rent and 5 x weeks Security Deposit £1,730.76 + Remaining First months rent £1,153.85 payable 2 working days before check in.

NB. Applicants must earn min 30 x rental (£1,500 pcm x 30) = £45,000 per year

- Three Bedrooms
- Spacious Lounge
- Kitchen/Diner
- En-Suite to Master bedroom
- Unfurnished
- Available 10th July 2023



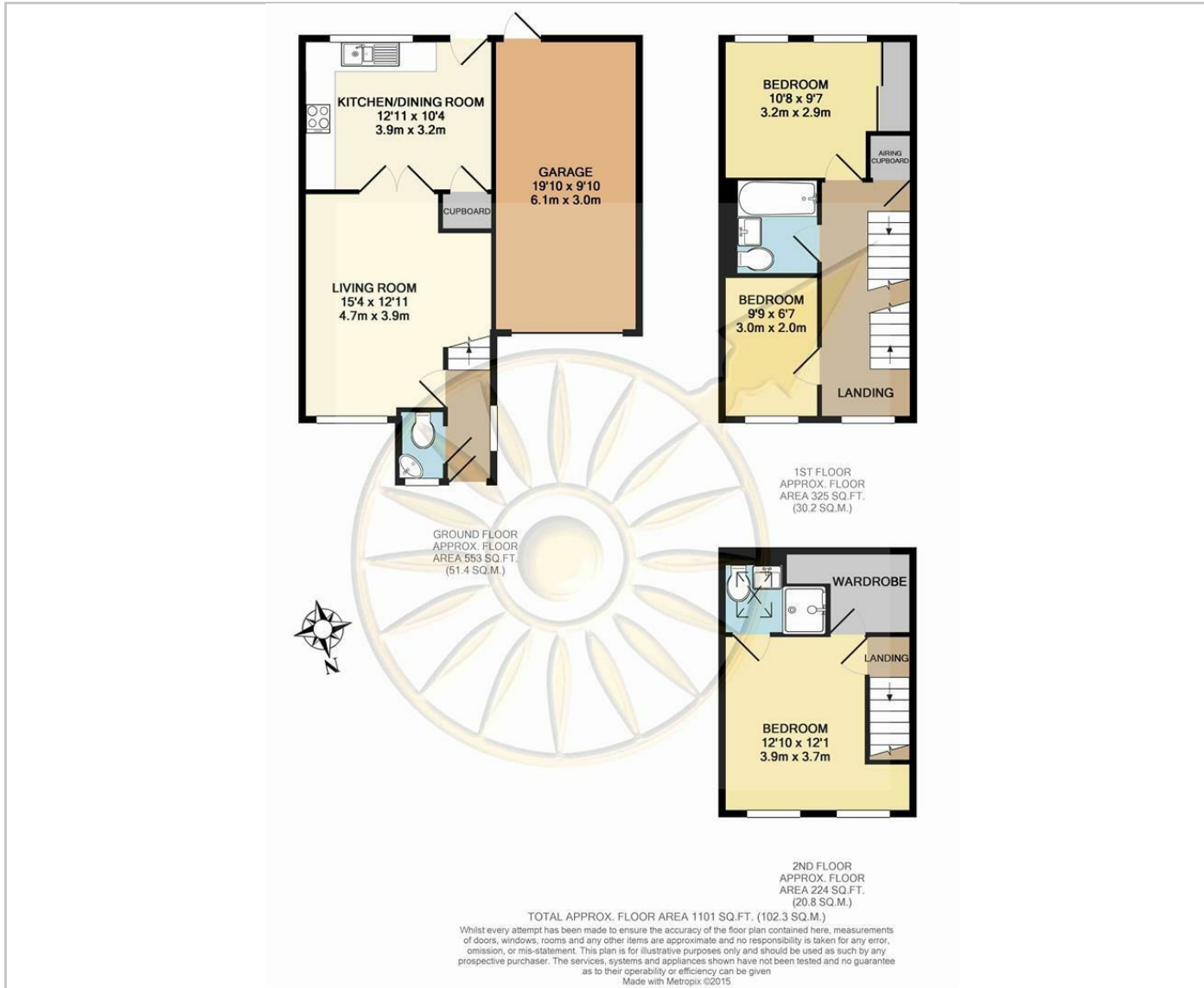
Unfurnished

Council Tax Band: D

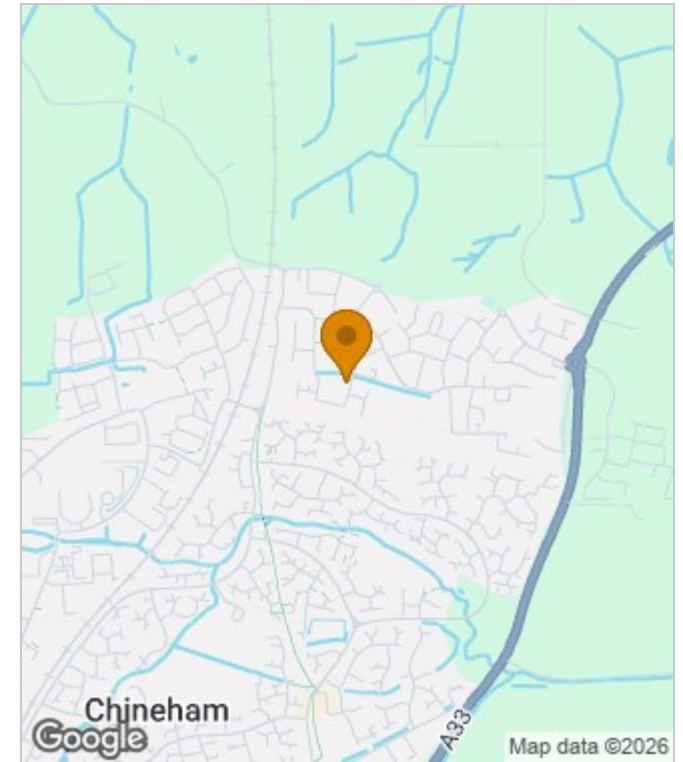
Available: 10th July 2023

Deposit: £1,730

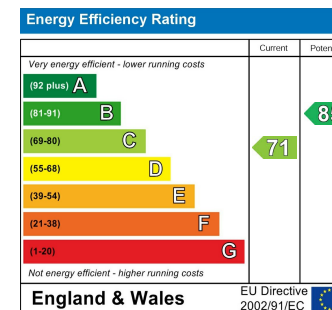
Floor Plans



Area Map



Energy Performance Graph



These particulars, whilst believed to be accurate are set out as a general outline only for guidance and do not constitute any part of an offer or contract. Intending purchasers should not rely on them as statements of representation of fact, but must satisfy themselves by inspection or otherwise as to their accuracy. No person in this firm's employment has the authority to make or give any representation or warranty in respect of the property.