



THE PROPERTY
EXPLORER



43 Lundy Close, Popley, Basingstoke, Hampshire, RG24 9AJ
£900 PCM





43 Lundy Close, Popley, Basingstoke, Hampshire, RG24 9AJ

£900 PCM

Property Explorer are pleased to offer to market this spacious first floor maisonette which has been FRESHLY DECORATED AND BRAND NEW CARPETS FITTED THROUGHOUT; Offering an impressive-sized reception room, large double bedroom, small second bedroom/study, NEW BATHROOM BEING FITTED FOR TENANCY, fitted kitchen, double-glazed windows and gas radiator central heating. Unfurnished. Regret No Smoking & No Pets. Council Tax band B. Available 4th August 2023.

Tenant Information: Assuming rent agreed at £900 per month the Holding Deposit £207.69 is payable once offer accepted 'Subject to contract' to go towards first months rent and 5 x weeks Security Deposit £1,038.46 + Remaining First months rent £692.31 payable 2 working days before check in.

NB. Applicants must earn min 30 x rental (£900 pcm x 30) = £27,000 household income per year

- Large Lounge
- Good Size Main Bedroom
- Small 2nd Bedroom/Study
- Gas Central Heating
- Communal Parking
- Available 4th August 2023



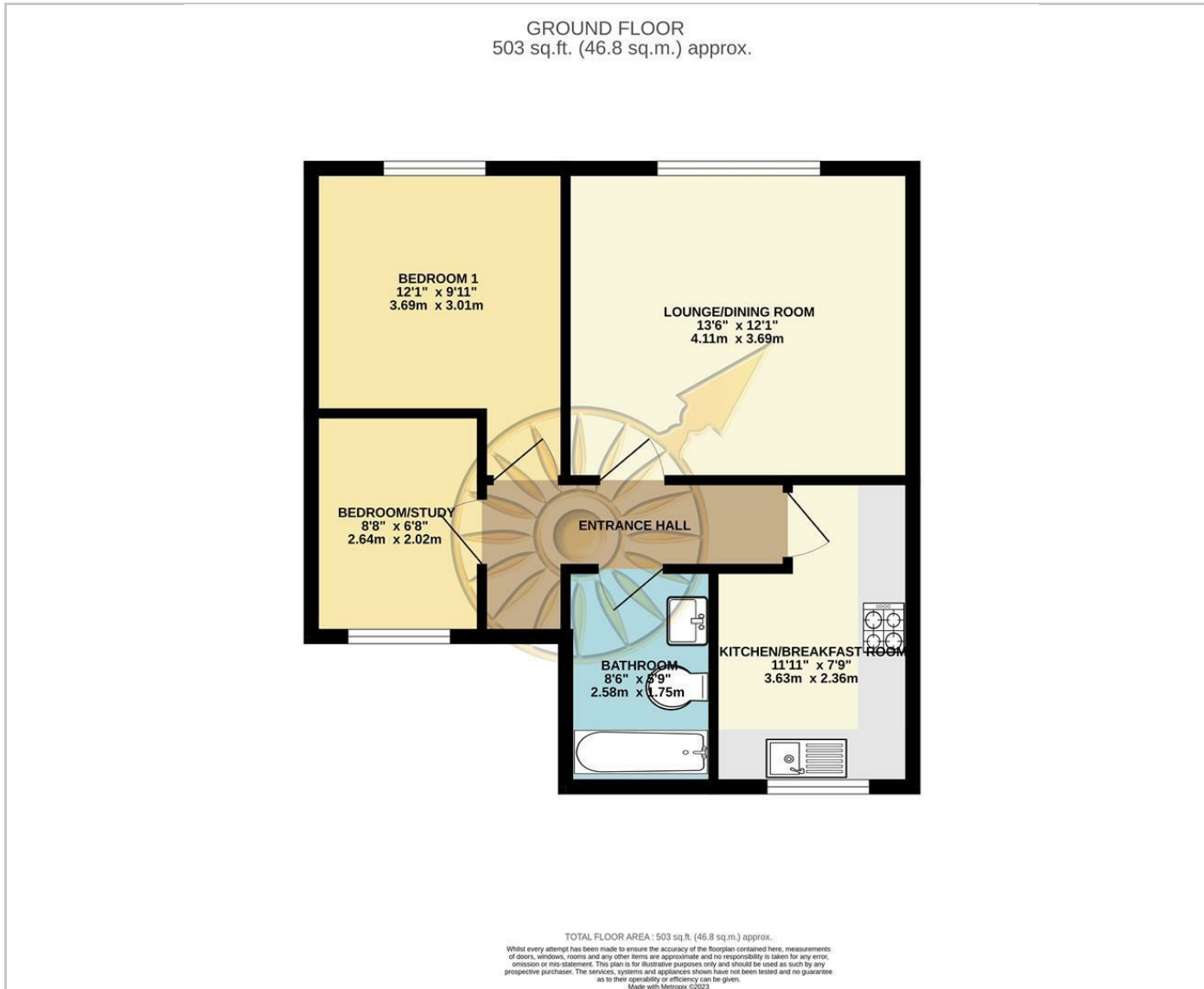
Unfurnished

Council Tax Band: B

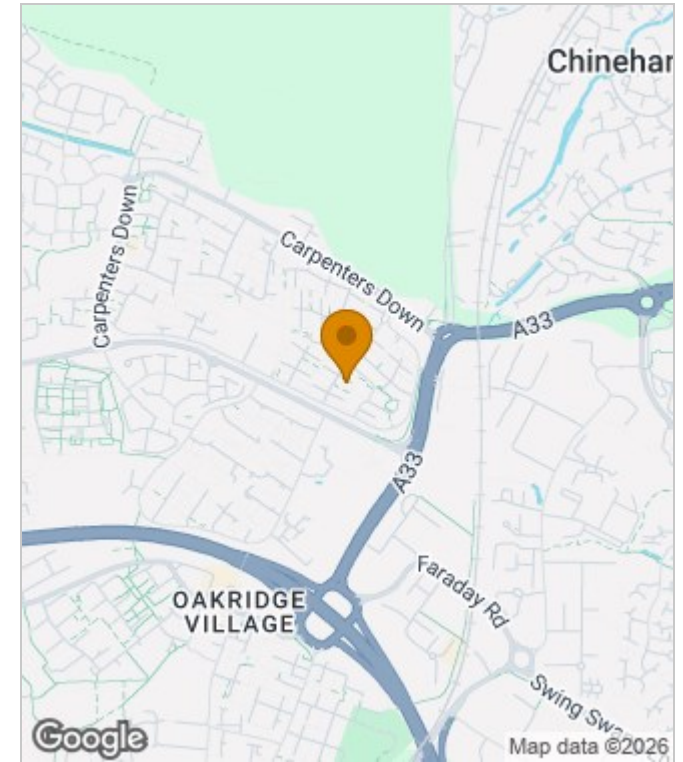
Available: 4th August 2023

Deposit: £1,038

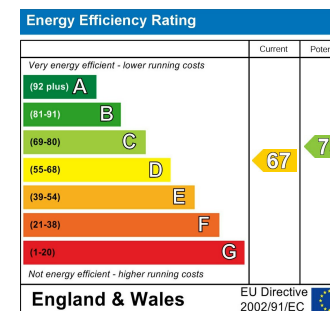
Floor Plans



Area Map



Energy Performance Graph



These particulars, whilst believed to be accurate are set out as a general outline only for guidance and do not constitute any part of an offer or contract. Intending purchasers should not rely on them as statements of representation of fact, but must satisfy themselves by inspection or otherwise as to their accuracy. No person in this firm's employment has the authority to make or give any representation or warranty in respect of the property.