



Flat 3

27 Woodlands Road, Camberley

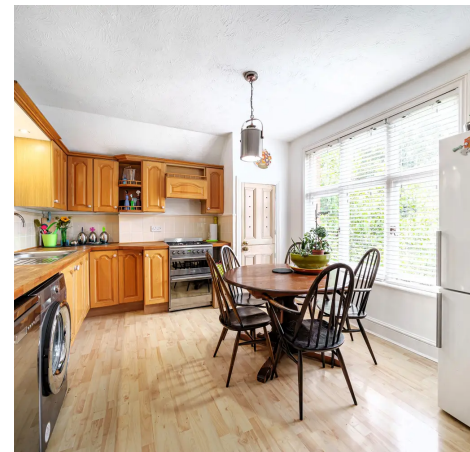
Beautifully presented 3 bed duplex apartment in an Edwardian building. 16ft lounge with bay windows, 14ft kitchen/breakfast room, refitted bathroom, eaves storage, allocated parking, communal garden, and 2 sheds. Walking distance to town centre. Call 01252 224899 to view.

Council Tax band: C

Tenure: Share of Freehold

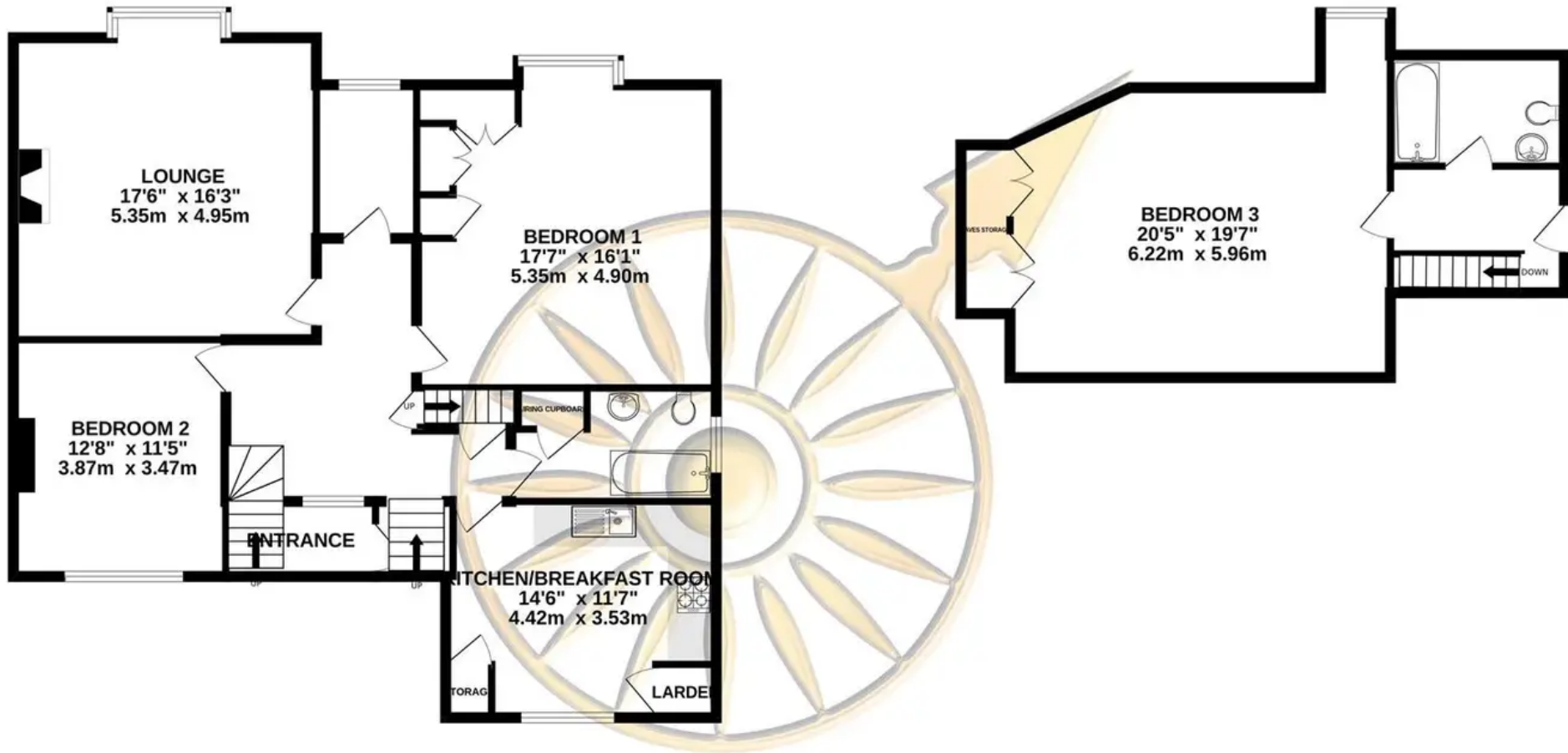
EPC Energy Efficiency Rating: F

EPC Environmental Impact Rating: F



GROUND FLOOR
1012 sq.ft. (94.0 sq.m.) approx.

1ST FLOOR
465 sq.ft. (43.2 sq.m.) approx.



TOTAL FLOOR AREA : 1476 sq.ft. (137.2 sq.m.) approx.

Whilst every attempt has been made to ensure the accuracy of the floorplan contained here, measurements of doors, windows, rooms and any other items are approximate and no responsibility is taken for any error, omission or mis-statement. This plan is for illustrative purposes only and should be used as such by any prospective purchaser. The services, systems and appliances shown have not been tested and no guarantee as to their operability or efficiency can be given.

Made with Metropix ©2023