



10 Rochester Close, Basingstoke, RG22 4PX

Offers In Excess Of £485,000 Freehold

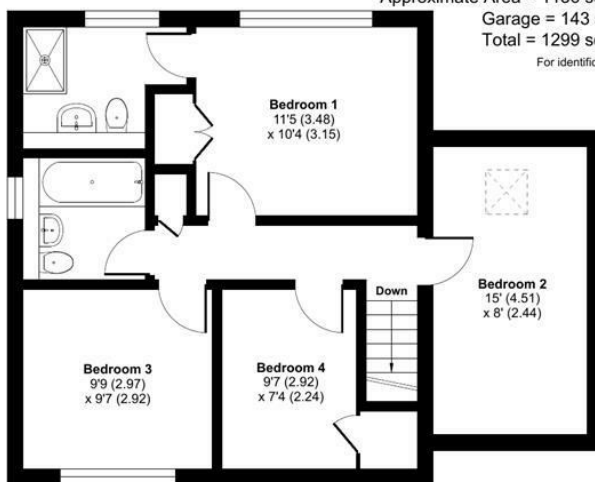


THE PROPERTY  
EXPLORER



# Rochester Close, Basingstoke, RG22

Approximate Area = 1156 sq ft / 107.3 sq m  
 Garage = 143 sq ft / 13.2 sq m  
 Total = 1299 sq ft / 120.5 sq m  
 For identification only - Not to scale



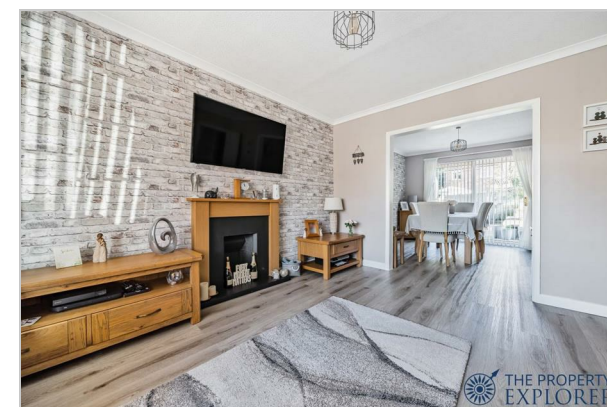
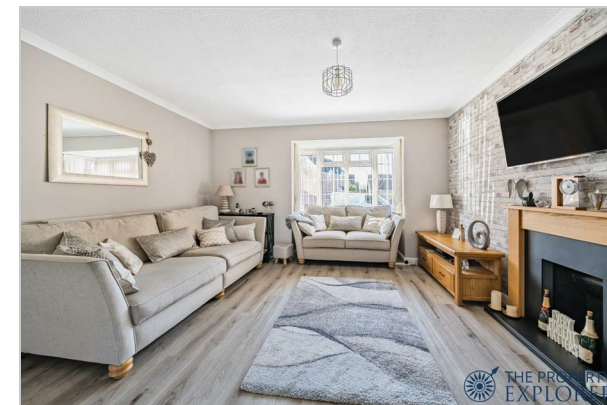
FIRST FLOOR



GROUND FLOOR



Floor plan produced in accordance with RICS Property Measurement Standards incorporating International Property Measurement Standards (IPMS2 Residential). © nrichcom 2024. Produced for Property Explorer. REF: 1078345



These particulars, whilst believed to be accurate are set out as a general outline only for guidance and do not constitute any part of an offer or contract. Intending purchasers should not rely on them as statements of representation of fact, but must satisfy themselves by inspection or otherwise as to their accuracy. No person in this firm's employment has the authority to make or give any representation or warranty in respect of the property.

Arena Business Centre, Suite GF11 The Square, Basing View, Basingstoke, Hampshire, RG21 4EB  
 Tel: 01256 321777 Email: [hello@thepropertyexplorer.co.uk](mailto:hello@thepropertyexplorer.co.uk) <https://www.thepropertyexplorer.co.uk>