



THE PROPERTY
EXPLORER



17 John Liddell Way, Basingstoke, RG21 6BG
£1,800 Per Month



3



2



1



B



17 John Liddell Way, Basingstoke, RG21 6BG

£1,800 Per Month

Explorer Lettings are delighted to present to the rental market this spacious well presented 3 bedroom town house on the popular Chapel Gate development maintained to a very high standard. Within walking distance to Festival Place town centre and the train station with 2 Parking spaces, further benefits: Spacious open plan Lounge/Dining room with Bi-fold doors and velux sky windows out onto the Garden, Kitchen with appliances, Downstairs Cloakroom, the first floor offers two double Bedrooms and a Jack and Jill family bathroom, the second floor offers the Master Bedroom, Dressing room and further Bathroom with walk in shower. Council Tax Band C, UNFURNISHED Regret No Pets. Available 12th May 2025.

Tenant Information: Assuming rent agreed at £1,800 per month the Holding Deposit £415.38 is payable once offer accepted 'Subject to contract' to go towards first months rent and 5 x weeks Security Deposit £2,076.92 + Remaining First months rent £1,384.62 payable 2 working days before check in.

NB. Applicants must earn min 30 x rental (£1,800 pcm x 30) = £54,000 household income per year

- 3 Bedroom Spacious Town House
- 2 Parking Spaces
- Lounge/Diner with Bi-Fold doors to the Garden
- Downstairs Cloakroom
- Master Bedroom with walk in Dressing room and additional full Size bathroom
- 2 Double Bedrooms
- Family bathroom
- Available 12th May 2025



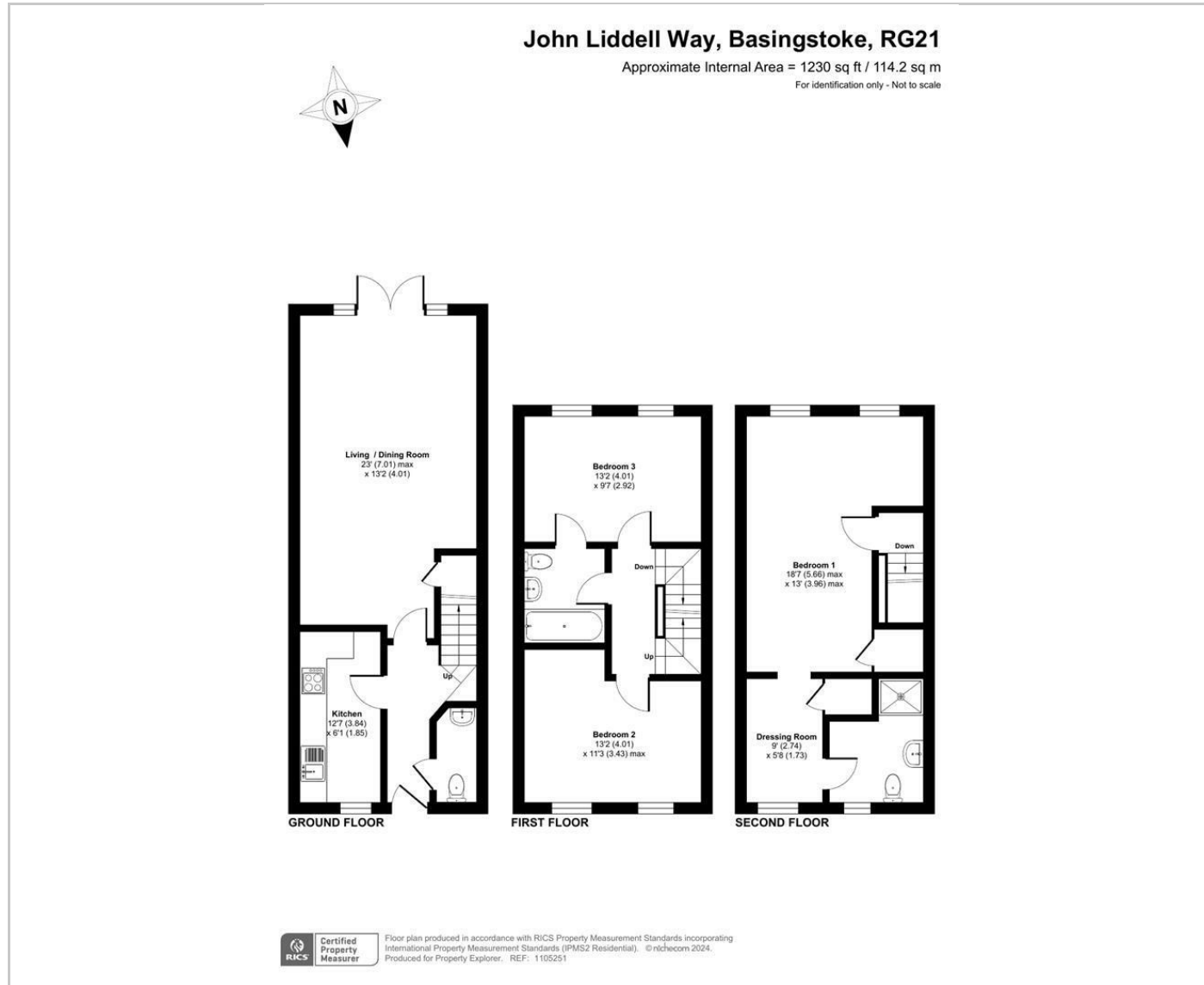
Unfurnished

Council Tax Band: C

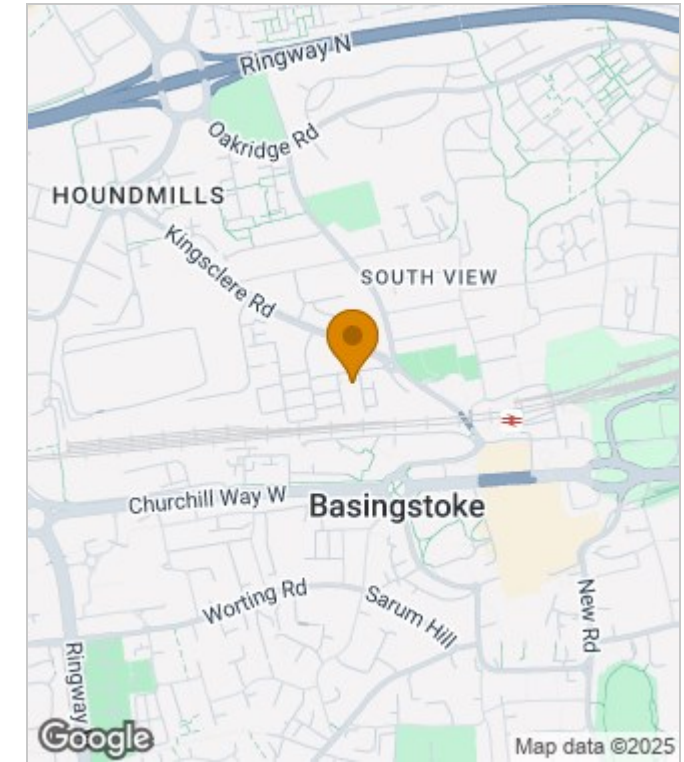
Available: 12th May 2025

Deposit: £2,076

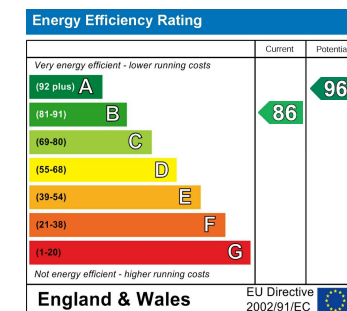
Floor Plans



Area Map



Energy Performance Graph



These particulars, whilst believed to be accurate are set out as a general outline only for guidance and do not constitute any part of an offer or contract. Intending purchasers should not rely on them as statements of representation of fact, but must satisfy themselves by inspection or otherwise as to their accuracy. No person in this firms employment has the authority to make or give any representation or warranty in respect of the property.