

2 Sydney Court, 1 Robertson Way – RG21 6BH

£250,000 Leasehold

ENSUITE TO MAIN BEDROOM • LONG LEASE – 146 YEARS • SERVICE CHARGE TBC • OPEN PLAN KITCHEN / LOUNGE / DINER • GROUND FLOOR • GROUND RENT £300pa • TWO ALLOCATED PARKING SPACES

01256 321777

www.thepropertyexplorer.co.uk

the property
explorer

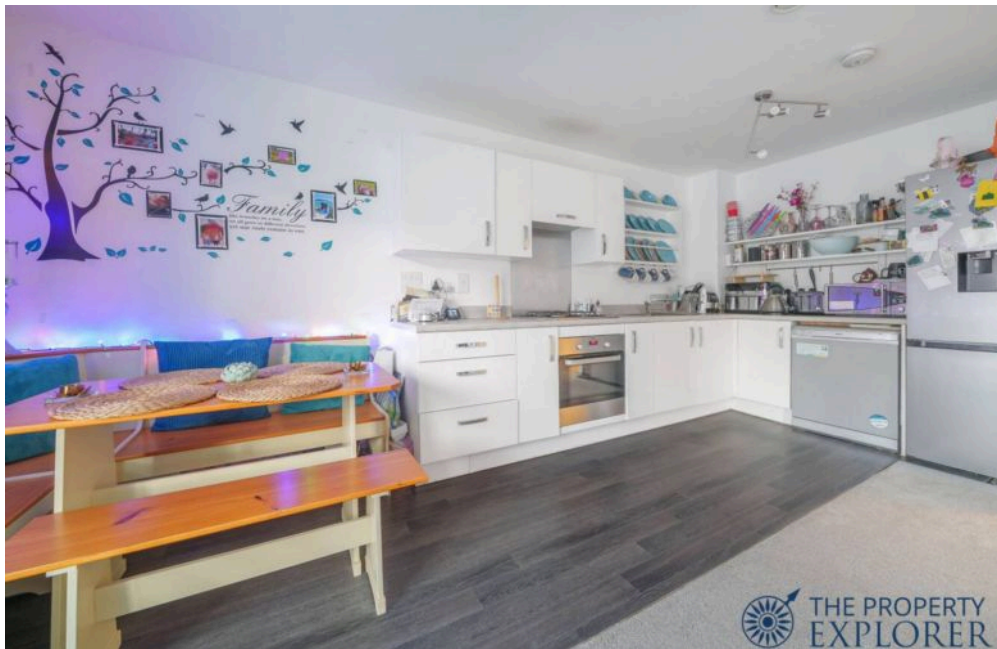
Stylish 2-bed ground floor apartment in sought-after area. Open-plan layout, sleek kitchen, 2 double bedrooms, en-suite, 146-year lease. Includes 2 parking spaces. Perfect blend of functionality and aesthetics.

Council Tax band: C

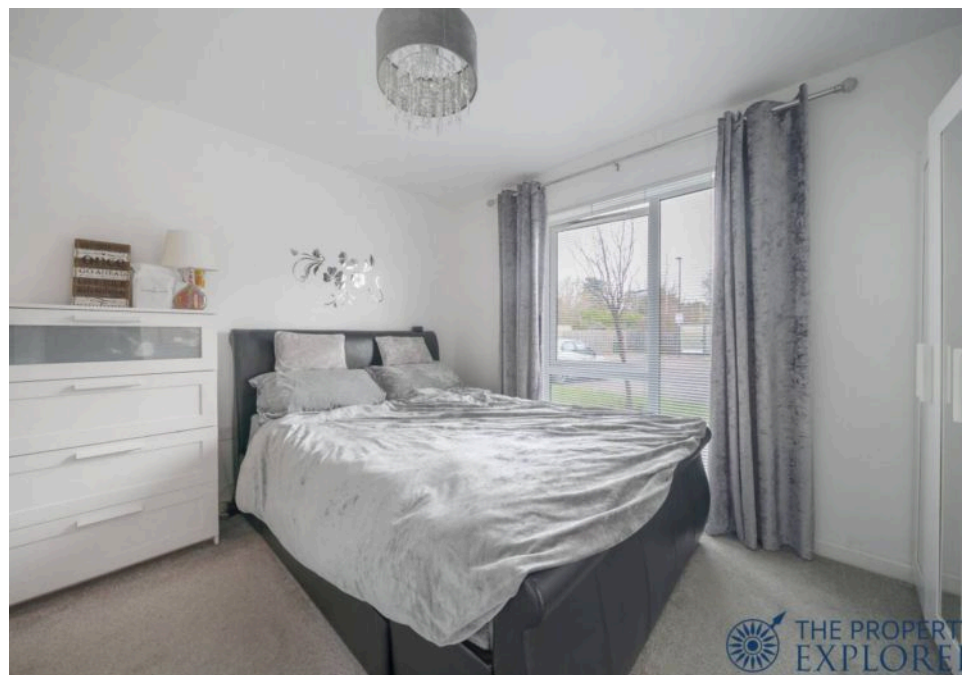
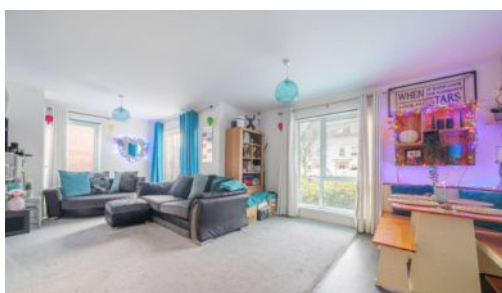
Tenure: Leasehold

EPC Energy Efficiency Rating: B

EPC Environmental Impact Rating: B



- › ENSUITE TO MAIN BEDROOM
- › LONG LEASE - 146 YEARS
- › SERVICE CHARGE TBC
- › OPEN PLAN KITCHEN / LOUNGE / DINER
- › GROUND FLOOR
- › GROUND RENT £300pa
- › TWO ALLOCATED PARKING SPACES





THE PROPERT
EXPLORE



THE PROPERT
EXPLORE



THE PROPERT
EXPLORE



THE PROPERT
EXPLORE

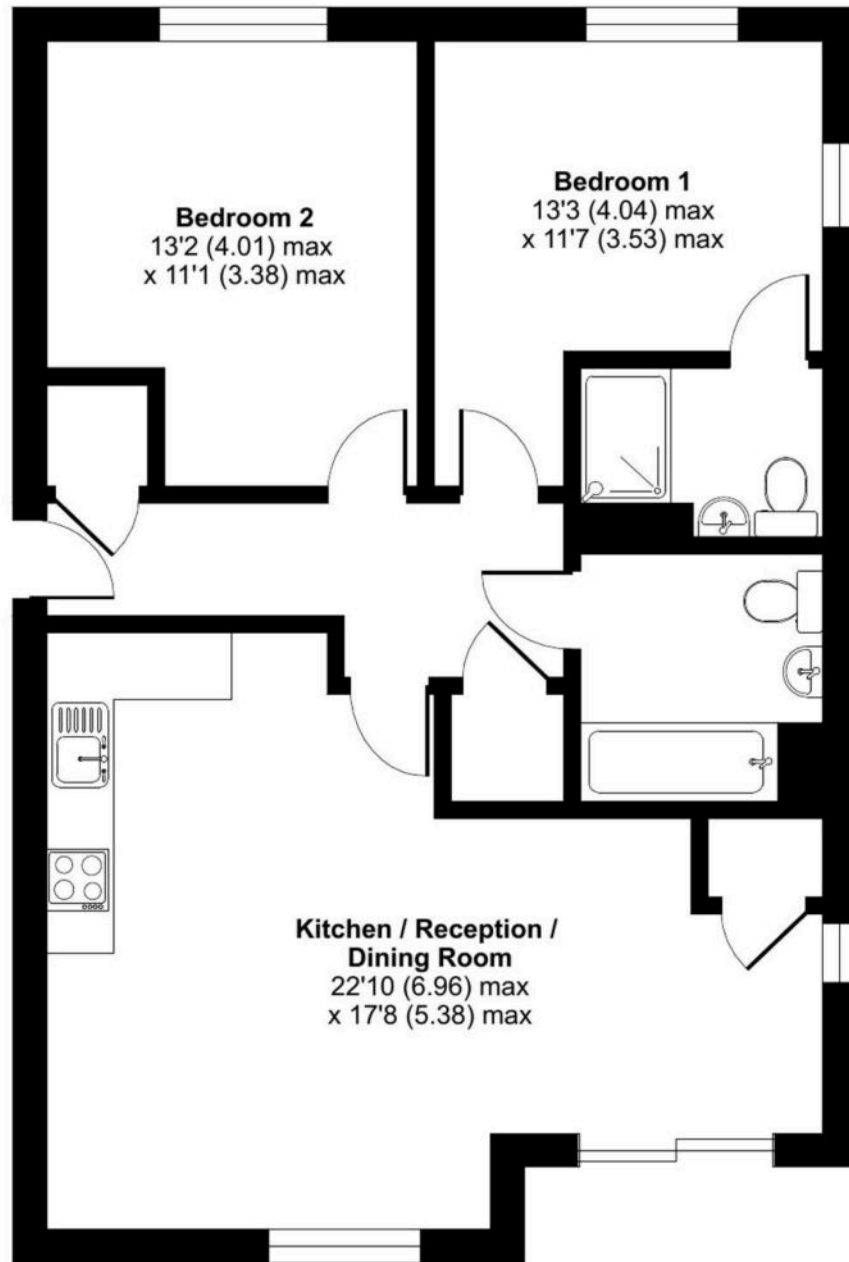


THE PROPERT
EXPLORE

Sydney Court, Robertson Way, Basingstoke, RG21

Approximate Area = 781 sq ft / 72.5 sq m

For identification only - Not to scale



FIRST FLOOR



Floor plan produced in accordance with RICS Property Measurement 2nd Edition, Incorporating International Property Measurement Standards (IPMS2 Residential). © nitchecom 2025. Produced for Property Explorer. REF: 1230986

You can include any text here. The text can be modified upon generating your brochure.