



THE PROPERTY  
EXPLORER



8 Olivers Close, Bramley, Tadley, Hampshire, RG26 5UL  
£900 PCM





## 8 Olivers Close, Bramley, Tadley, Hampshire, RG26 5UL

£900 PCM

Explorer Lettings are delighted to offer to the market this nicely presented first floor, two double bedroom, two bathroom split level apartment situated in the beautiful village of Bramley in Hampshire, with excellent links to the A33, M3, M4 and both Basingstoke and Reading. Unfurnished, Regret no pets. Available 17th December 2021

Tenant Information: Assuming rent agreed at £900 per month the Holding Deposit £207.69 is payable once offer accepted 'Subject to contract' to go towards first months rent and 5 x weeks Security Deposit £1038.46 + Remaining First months rent £692.31 payable 2 working days before check in.

NB. Applicants must earn min 30 x rental (£900 pcm x 30) = £27,000 household income per year

- 2 DOUBLE BEDROOMS
- 2 x GARAGES
- ENSUITE TO MASTER
- PRIVATE GARDEN
- AVAILABLE 17TH  
DECEMBER 2021



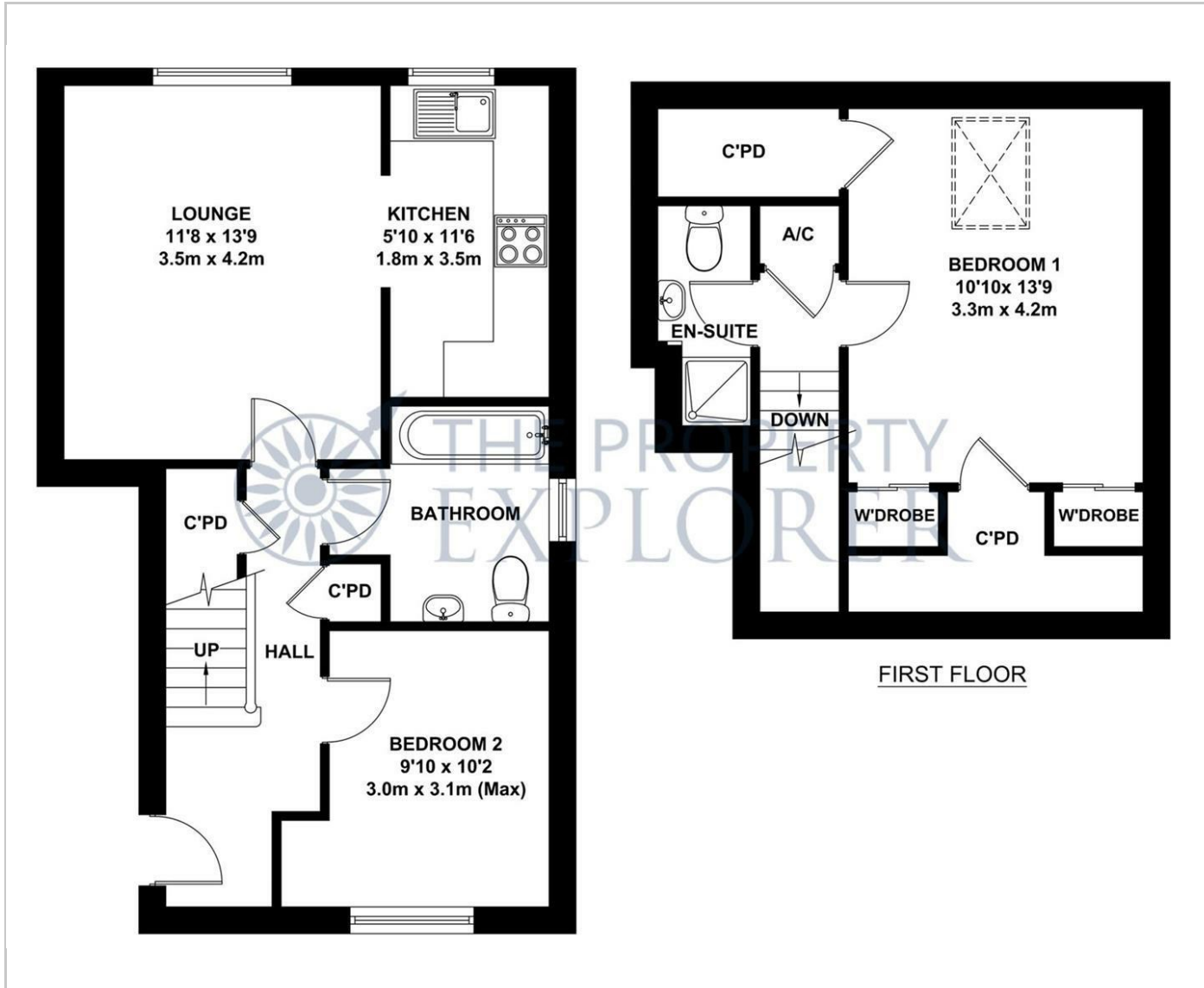
Unfurnished

Council Tax Band: C

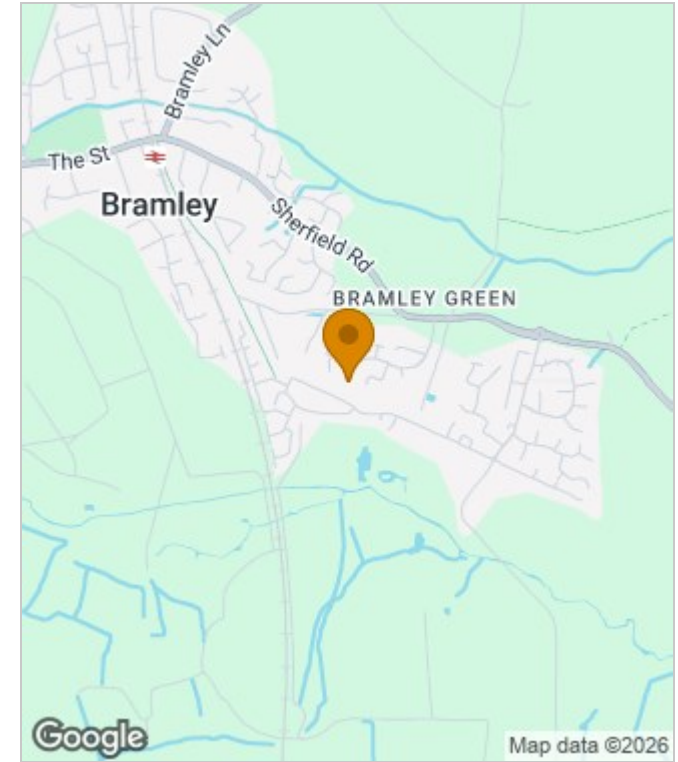
Available: 17th December  
2021

Deposit: £1,038

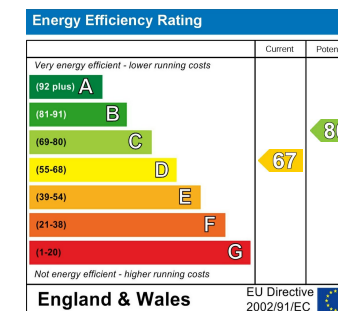
## Floor Plans



## Area Map



## Energy Performance Graph



These particulars, whilst believed to be accurate are set out as a general outline only for guidance and do not constitute any part of an offer or contract. Intending purchasers should not rely on them as statements of representation of fact, but must satisfy themselves by inspection or otherwise as to their accuracy. No person in this firms employment has the authority to make or give any representation or warranty in respect of the property.