



## 21 Freya House London Road, Old Basing - RG24 7JL

£140,000 Leasehold

Service Charge £40.24 p/a • Lease Remaining 115 Years • Ground Rent £304.54 p/a • Council Tax Band A • EPC C  
• Spacious Double Bedroom • First Floor Apartment • Attractive Views over the River Lyde • Allocated Parking Space • Underfloor Heating Throughout

01256 321777

[www.thepropertyexplorer.co.uk](http://www.thepropertyexplorer.co.uk)

the property  
**explorer**

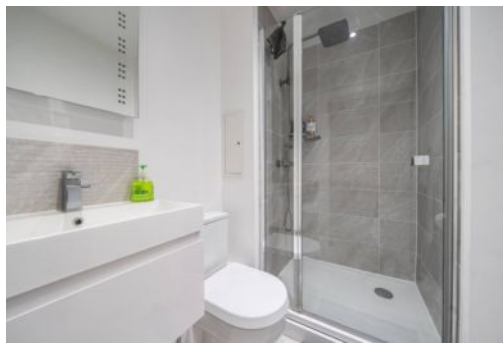
Explorer are delighted to bring to the market this luxurious first-floor apartment, ideally positioned in the heart of Old Basing within Freya House, a modern conversion offering contemporary living in a charming village setting.

Council Tax band: C

Tenure: Leasehold



- Service Charge £40.24 p/a
- Lease Remaining 115 Years
- Ground Rent £304.54 p/a
- Council Tax Band A
- EPC C
- Spacious Double Bedroom
- First Floor Apartment
- Attractive Views over the River Lyde
- Allocated Parking Space
- Underfloor Heating Throughout

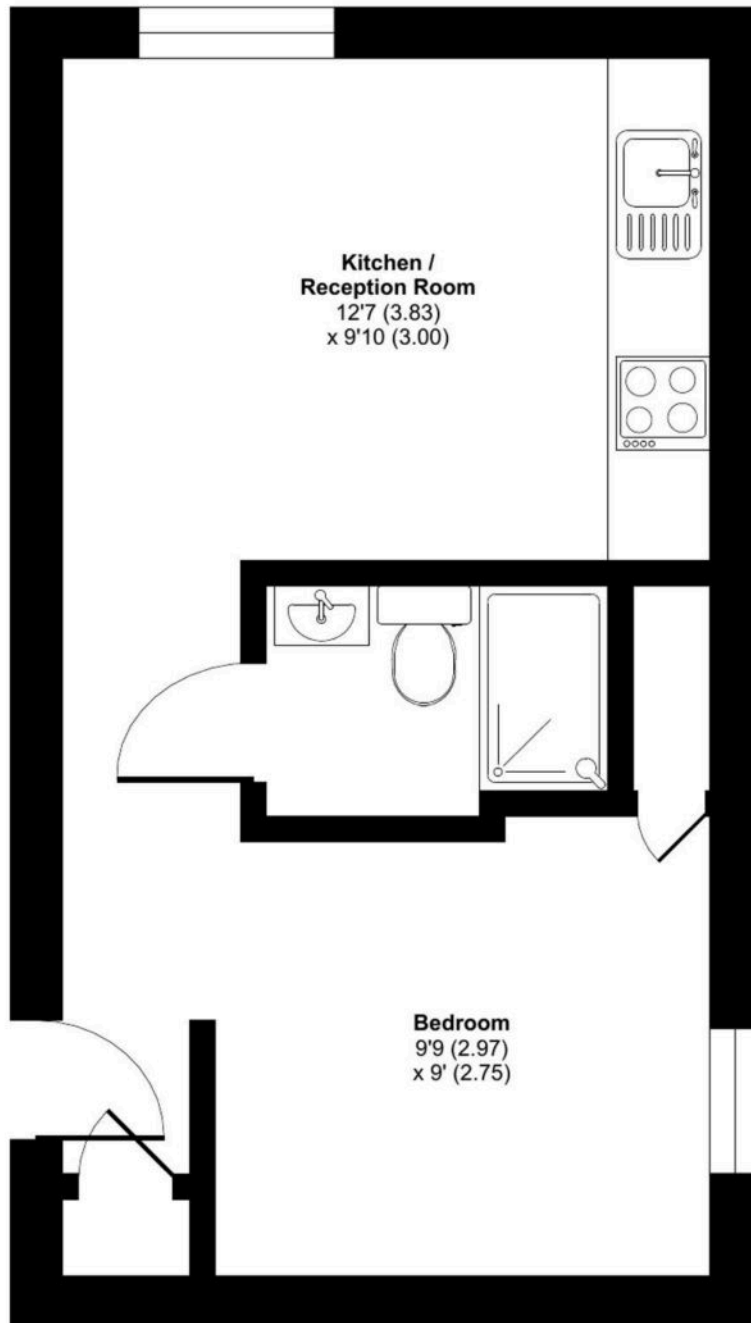




# London Road, Old Basing, Basingstoke, RG24

Approximate Area = 301 sq ft / 27.9 sq m

For identification only - Not to scale



**FIRST FLOOR**



Floor plan produced in accordance with RICS Property Measurement 2nd Edition, Incorporating International Property Measurement Standards (IPMS2 Residential). © nchecom 2026. Produced for Property Explorer. REF1408046

You can include any text here. The text can be modified upon generating your brochure.