



26 Ascot Court, Aldershot

£190,000 Leasehold

TOP FLOOR APARTMENT • LOUNGE • KITCHEN • FAMILY BATHROOM • UPVC DOUBLE GLAZING • EXTENDED LEASE • PERMIT PARKING • WALKING DISTANCE OF TOWN AND TRAIN STATION



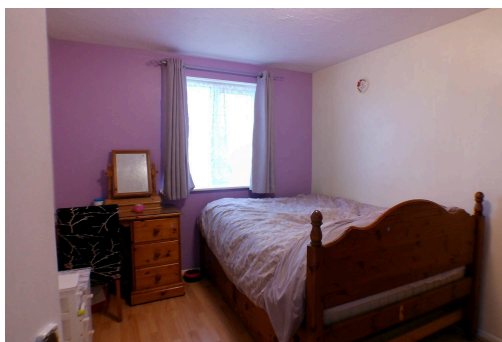
Well presented top floor flat with 2 bedrooms, spacious lounge, modern kitchen and bathroom, permit parking, extended lease. Town centre location near shops and station. Ideal for first-time buyers.

Council Tax band: C

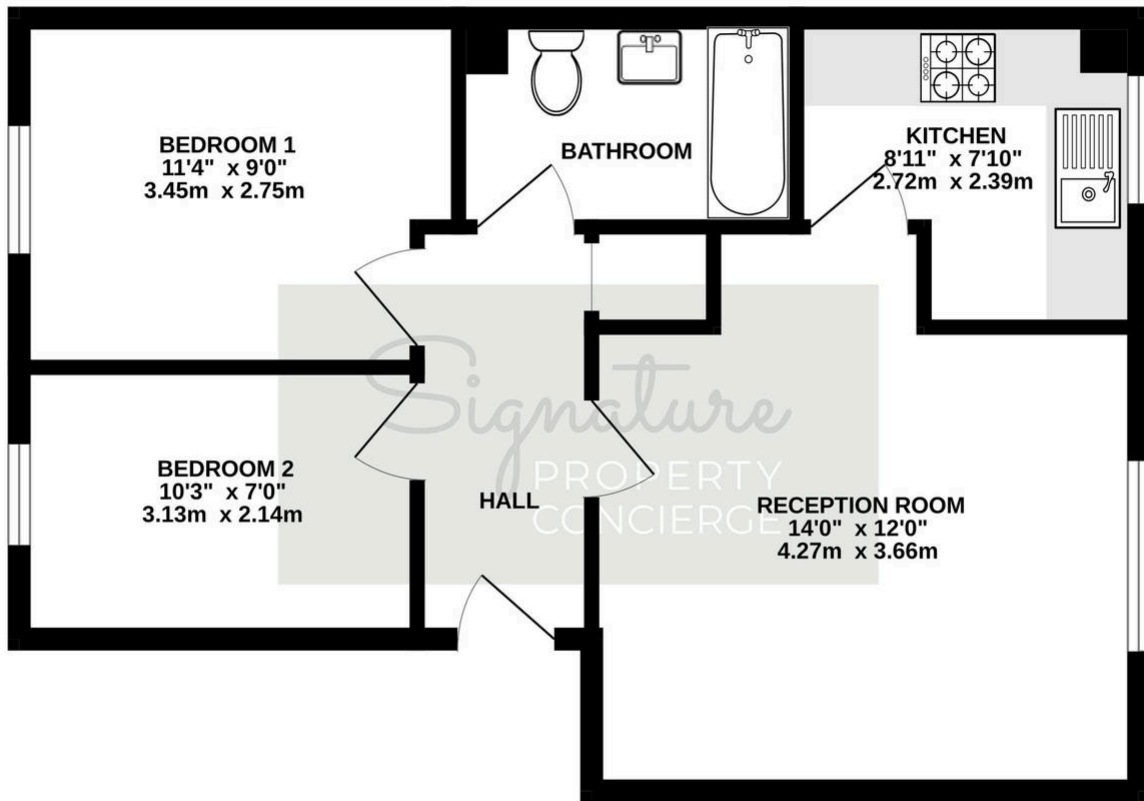
Tenure: Leasehold



- › TOP FLOOR APARTMENT
- › LOUNGE
- › KITCHEN
- › FAMILY BATHROOM
- › UPVC DOUBLE GLAZING
- › EXTENDED LEASE
- › PERMIT PARKING
- › WALKING DISTANCE OF TOWN AND TRAIN STATION



TOP FLOOR
515 sq.ft. (47.8 sq.m.) approx.



TOTAL FLOOR AREA : 515 sq.ft. (47.8 sq.m.) approx.

Whilst every attempt has been made to ensure the accuracy of the floorplan contained here, measurements of doors, windows, rooms and any other items are approximate and no responsibility is taken for any error, omission or mis-statement. This plan is for illustrative purposes only and should be used as such by any prospective purchaser. The services, systems and appliances shown have not been tested and no guarantee as to their operability or efficiency can be given.
Made with Metropix ©2026