



Saunders Way, Longacre, RG23 7FA

£325,000 OFFERS OVER

2 DOUBLE BEDROOMS • ENSUITE TO PRINCIPLE BEDROOM • DOWNSTAIRS WC • SOUTHERLY FACING GARDEN • CLOSE TO LOCAL AMENITIES • OFF ROAD PARKING 2 CARS

01256 321777

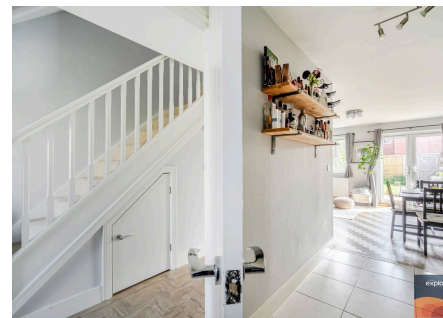
www.thepropertyexplorer.co.uk

the property
explorer

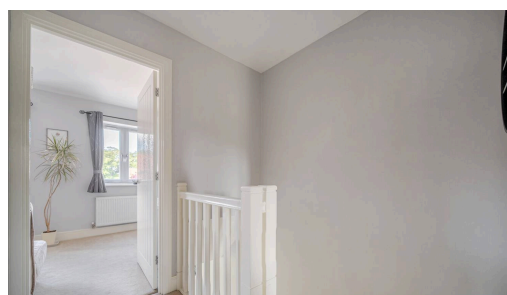
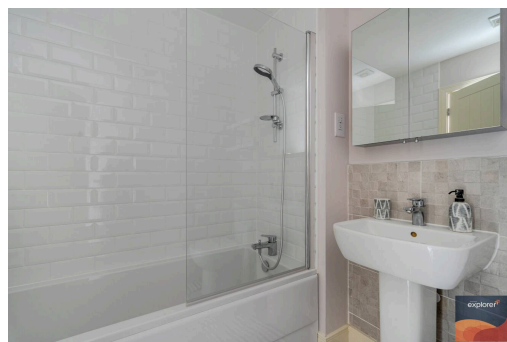
EXPLORER. We are delighted to bring to the market this beautifully presented two double bedroom semi detached home, built by Linden Homes to their popular Chester design. The property offers stylish and well appointed accommodation throughout, featuring a luxury kitchen with quartz worktops, a spacious living and dining area, and a convenient downstairs cloakroom. Upstairs, the principal bedroom benefits from an en suite shower room, while the family bathroom has been tastefully upgraded. Outside, the south facing rear garden has been thoughtfully landscaped and well maintained, with an attractive sandstone patio providing the perfect space for outdoor entertaining and relaxation. The garden also enjoys a good degree of privacy and offers gated access to 2 allocated parking spaces located to the rear.

Council Tax band: D

EPC Energy Efficiency Rating: B



- 2 DOUBLE BEDROOMS
- ENSUITE TO PRINCIPLE BEDROOM
- DOWNSTAIRS WC
- SOUTHERLY FACING GARDEN
- CLOSE TO LOCAL AMENITIES
- OFF ROAD PARKING 2 CARS

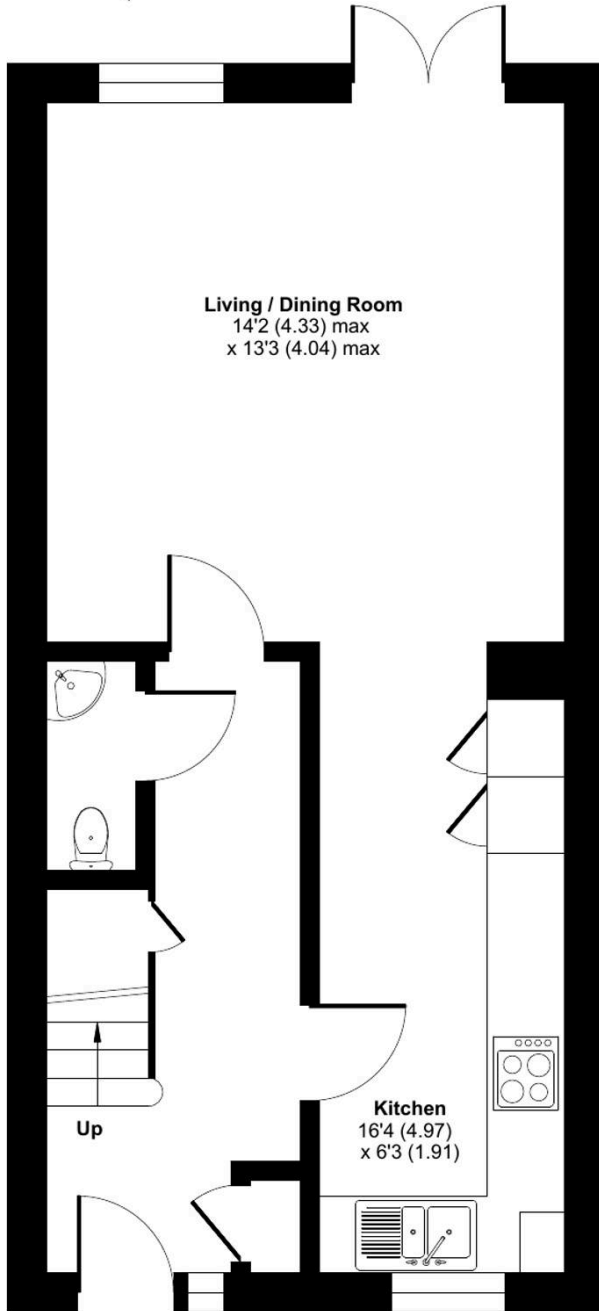




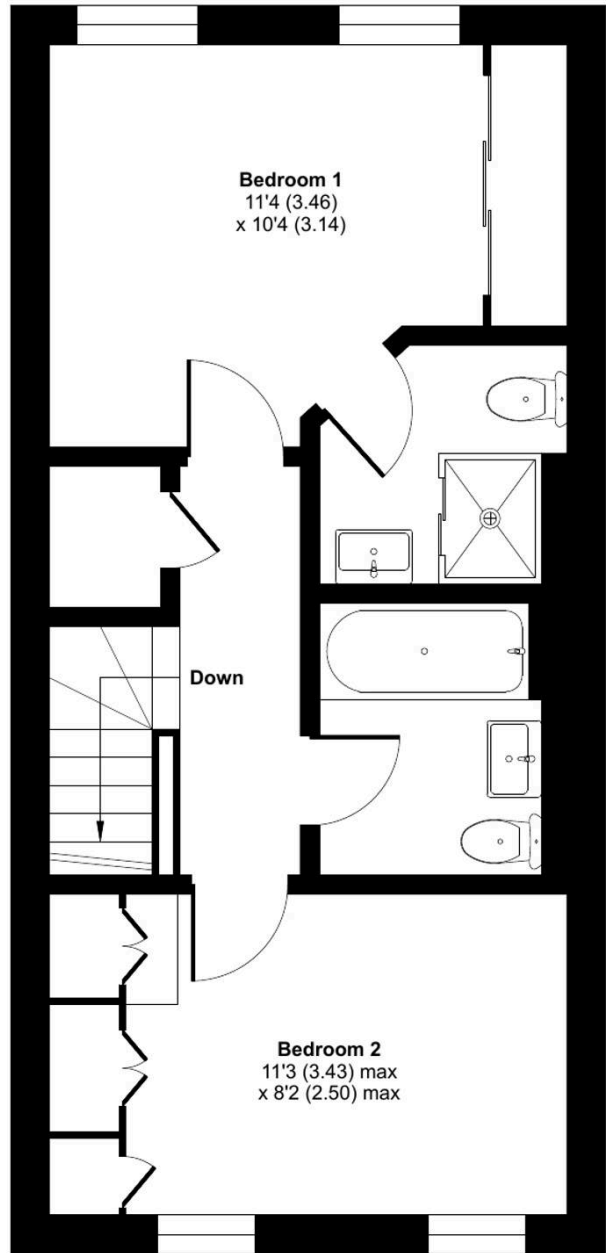
Saunders Way, Basingstoke, RG23

Approximate Area = 796 sq ft / 73.9 sq m

For identification only - Not to scale



GROUND FLOOR



FIRST FLOOR



Floor plan produced in accordance with RICS Property Measurement 2nd Edition, Incorporating International Property Measurement Standards (IPMS2 Residential). © nchecom 2026. Produced for Property Explorer. REF: 1471137